



# Tread ACHIL VISUAL 02

## Steel 240 YP

Visibility and safety are increased with the blank front nose, so transitions between treads are clearly marked. Classified in the highest anti-slip class R13 according to DIN 51130. Upwards punched holes and downwards drain holes ensure drainage of liquids so that the surface is dry and non-slip. The rolled flanges provides the stair tread a high load capacity, while protecting footwear and sharp edges are avoided. The tread comes with bolt holes in end pieces for mounting on the stringers.



### Specifications

PTV guidelines	36+ Low Slip Potential
Dry PTV average	66
Wet PTV average	50
Slip resistance	R13 = slope >35° acc. to DIN 51130
Displacement space	V10 acc. to DIN 51130
Flange design	Achil [ b ]
Free area	20-25 %
Upward grip holes	dia. 9
Downward drainage holes	dia. 5 mm
C-C grid	25 x 25 mm
	3 kN / 100x100mm
Fire resistance Critical temperature	550 °C

### Suitable application areas

Straight staircases

## Related products

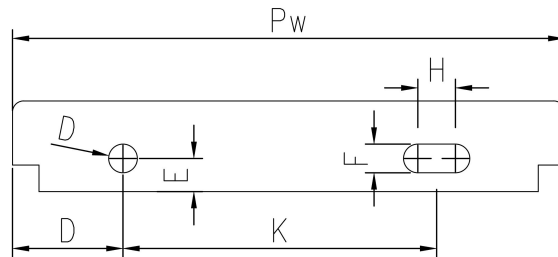
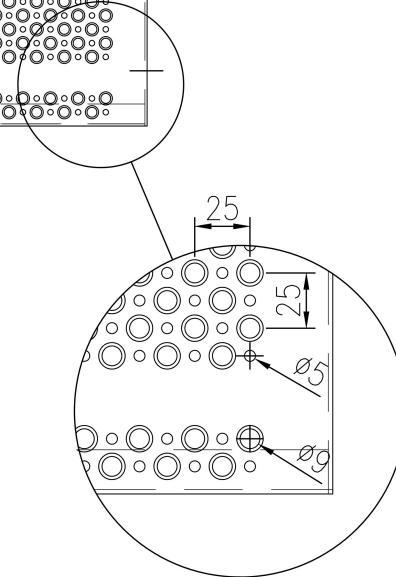
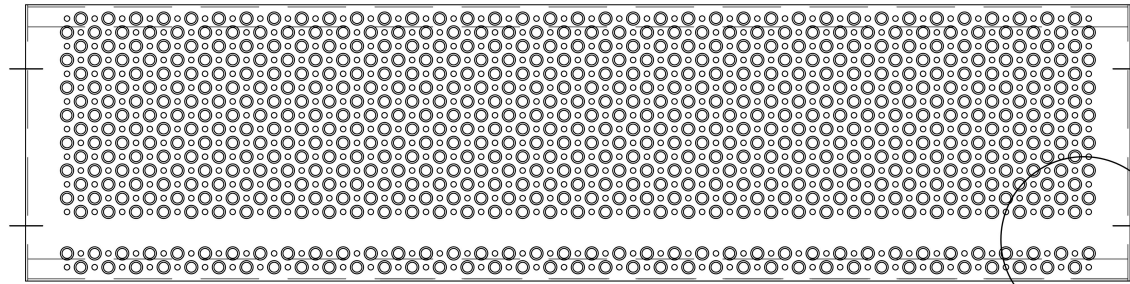
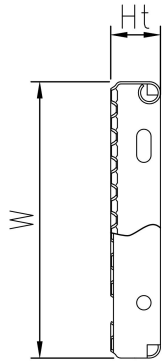
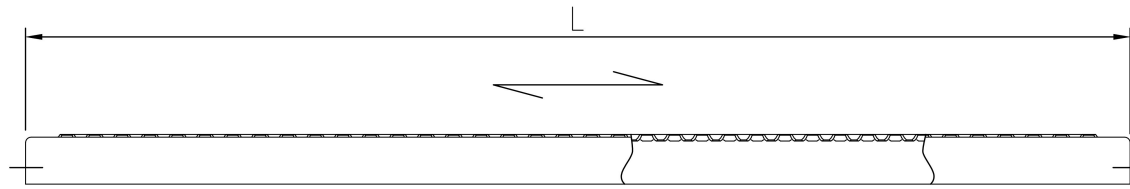
Tread plank ACHIL VISUAL O2

### Standard dimensions

Length (mm)	Width (mm)	Height (mm)	Mat. thickness (mm)	Finish	Availability	Item number
800	150	45	2	Hot-dip galvanised	On request	F100590101
900	150	45	2	Hot-dip galvanised	On request	F100600101
1000	150	45	2	Hot-dip galvanised	Stock item	F100610101
800	200	45	2	Hot-dip galvanised	Stock item	F100620101
1200	250	58	2	Hot-dip galvanised	On request	F100640101
1000	275	45	2	Hot-dip galvanised	Stock item	F100650101
800	300	45	2	Mill finish	Stock item	F100660100
800	300	45	2	Hot-dip galvanised	Stock item	F100660101
900	300	45	2	Hot-dip galvanised	Stock item	F100670101
1000	300	45	2	Hot-dip galvanised	Stock item	F100680101
900	275	45	2	Hot-dip galvanised	Stock item	F100960101
800	250	45	2	Hot-dip galvanised	Stock item	F101020101
900	200	45	2	Hot-dip galvanised	On request	F102540101
900	250	45	2	Hot-dip galvanised	Stock item	F102650101
1000	250	45	2	Hot-dip galvanised	Stock item	F100630101

### End piece dimensions

Width (Pw) (mm)	Total height (Ht) (mm)	D (mm)	E (mm)	F (mm)	G (mm)	H (mm)	K (mm)
150		35	15	13	13	17	78
200		45	15	13	13	17	102
225		45	15	13	13	17	127
250		50	15	13	13	17	142
275		62	15	13	13	17	143
300		50	15	13	13	17	192



**PcP** Product name  
OPTIMO Tread BUILD VISUAL O2